

## EA200N

600VA~3000VA



## Features

- LCD display
- Pure sine wave output
- Microprocessor-based digital control
- Boost and buck AVR for voltage stabilization
- Frequency adaptive
- Humanized alarm system
- Automatically diagnose when starts
- Cold start
- Auto restart while AC is recovering
- Intelligent battery management
- Short circuit and overload protection
- Automatically charging battery at UPS off mode
- Optional RS232/USB/SNMP communication port and RJ11/RJ45 protection

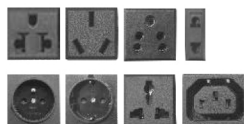


## Control Panel

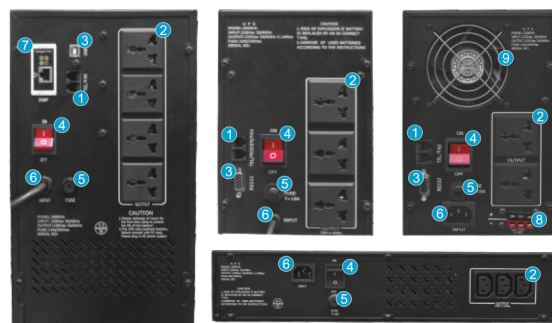
1. Bypass
2. AC Input
3. AC Output
4. Battery(Green AC mode, Red Inv mode)
5. LCD

## Rear Panel

1. TEX/FAX(Optional)
2. Output Sockets
3. RS232/USB(Optional)
4. Input Switch
5. Fuse
6. Input
7. SNMP(Optional)
8. DC Input
9. Fan



Optional socket



## Specifications

MODEL	AR-206N	AR-210N	EA215N	EA220N	EA230N	
Capacity	600VA/360W	1000VA/600W	1500VA/900W	2000VA/1200W	3000VA/1800W	
<b>INPUT</b>						
Voltage	100V/110V/120VAC ± 25% or 220V/230V/240VAC ± 25% (-35% optional)					
Frequency	50/60Hz ± 10%(Auto Sensing)					
<b>OUTPUT</b>						
Voltage	100V/110V/120VAC or 220V/230V/240VAC					
Voltage Regulation	AC mode: ± 10%, Battery mode: ± 5%					
Frequency	50/60Hz ± 1%(Auto Sensing)					
Waveform	Pure sine wave					
Crest Factor	3:1					
Harmonic Distortion	≤5%(Liner Load)					
Transfer Time	≤8ms					
<b>EFFICIENCY</b>						
AC Mode	≥96%					
Battery Mode	≥80%					
<b>BATTERY</b>						
Standard Model	DC Voltage	12V	24V	24V	36V	48V
	Type & Number	1x12V7Ah	2x12V7Ah	2x12V8Ah	3x12V8Ah	4x12V8Ah
Long time Model	DC Voltage	12V	24V	36V	48V	48V
	Charger Current	12A(Max)				
Typical Recharge Time	8 hours recover to 90% capacity					
<b>PROTECTION</b>						
Full Protection	Overload, Short circuit protection, Battery overcharge and discharge protection					
<b>ALARM</b>						
Battery Mode	Beep every 5seconds, be silent after 40seconds					
Battery Low	Beep every 0.5 second					
Overload	Beep every 1 second					
<b>ENVIRONMENT</b>						
Humidity	10~90% RH @ 0~40°C(non-condensing)					
Noise Level	≤50dB (1m)					
<b>MANAGEMENT</b>						
Optional RS232/USB	Supports Windows® 98/2000/2003/XP/Vista/2008/ Windows® 7/8					
Optional SNMP	Power management from SNMP manager and web browser					
<b>PHYSICAL</b>						
Tower	Dimension(mm) WxDxH	125x320x220	145x360x215		145x430x215(S) 145x360x215(H)	190x475x337
	Packing Dimension(mm) WxDxH	180x370x295	236x427x316		236x492x316(S) 236x427x316(H)	320x592x462
	Net Weight(kg)	7.0(H),8.0(S)	9.4(H),12.2(S)	10.1(H),13.7(S)	13.4(H),18.0(S)	23.0(H),27.0(S)
	Gross Weight(kg)	7.5(H),8.5(S)	10.4(H),13.2(S)	11.7(H),14.7(S)	14.4(H),19.0(S)	24.4(H),28.5(S)
Rack Mount	Dimension(mm) WxDxH	483x309x88			483x360x132	
	Packing Dimension(mm) WxDxH	525x395x185			525x455x225	
	Net Weight(kg)	10.5(H),11.5(S)	12.4(H),15.2(S)	16.0(H),19.0(S)	18.0(H),22.6(S)	24.0(H),28.0(S)
Gross Weight(kg)	11.5(H),12.5(S)	13.4(H),16.2(S)	17.0(H),20.0(S)	19.0(H),23.6(S)	25.0(H),29.2(S)	

Mark: S means standard model, H means long backup time model.

- All specifications subject to change without notice.
- Custom-made specifications are acceptable